

Digitisation platform C-Gate with new QINEO functions

Efficient welding production with comprehensive online monitoring of welding machines

HAIGER, March 2021 - With the C-Gate digitisation platform from CLOOS, users can access information from their welding production in real time. All information is entered and processed centrally in an integrated information and communication tool. It consists of several modules which users can activate depending on their individual digitalisation strategy. In addition to access to the operating and process data of the QIROX robot systems, the production module now also enables comprehensive online monitoring of the QINEO welding machines.

This includes classic operating data with target/actual comparisons including calculation and visualisation of the system effectiveness. All data and key figures can be analysed, visualised and processed via interface. Shift plans and component data can also be transferred from upstream systems via interface.

The user-specific presentation of information with customisable dashboards and reports enables detailed visualisation, analysis and further processing of the collected operating and welding process data. This allows users to monitor and control their production processes down to the smallest detail. With a manual QINEO welding machine, productivity can be determined, for example, on the basis of availability and arc burning time. Freely definable warnings early inform users about what happens in your production. Timely recognition of errors prevents unplanned downtimes and quality problems are solved directly.

With open interfaces (APIs) and standards such as OPC UA, the system can be easily and securely integrated into existing network and application environments (MES, ERP). Whether as central virtual server solution or as system-near edge-gateway implementation – all CLOOS robot systems and welding machines can be connected to the platform. Furthermore, existing QIROX robot systems and QINEO welding machines can be integrated. Thus the C-Gate supports users in their digitalisation and smart factory projects.

More information: <https://c-gate.cloos.de/en/>



Photo 1: C-Gate now also offers a comprehensive online monitoring of the QINEO welding machines.

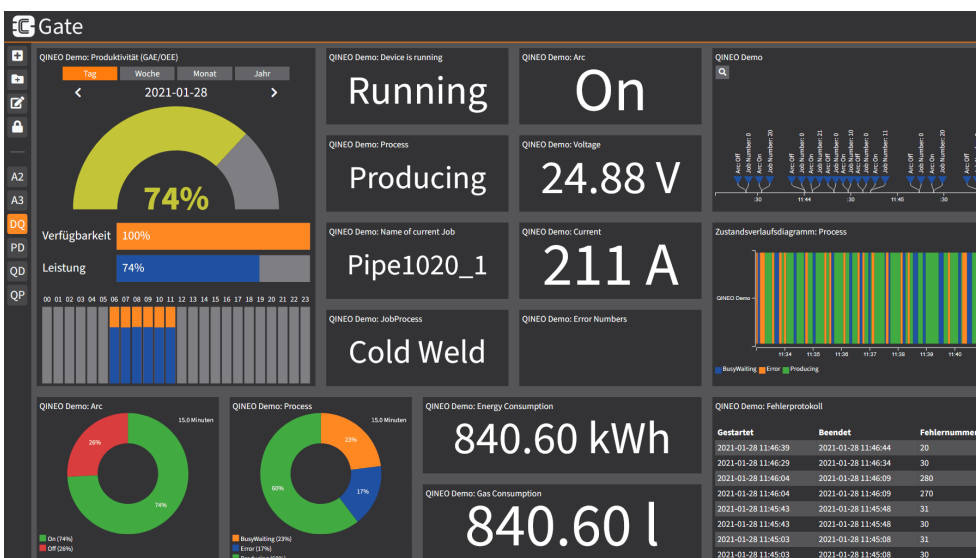


Photo 2: The dashboards can be adapted to the individual needs of the users.

**CLOOS Welding technology:
Robot and welding technology from a single source**

Since 1919, Carl Cloos Schweisstechnik GmbH has been one of the leading companies in welding technology. More than 800 employees all over the world realise production solutions in welding and robot technology for industries such as construction machinery, railway vehicles, automotive and

agricultural industry. The modern CLOOS welding power sources of the QINEO series are available for a multitude of welding processes. With the QIROX robots, positioners and special purpose machines CLOOS develops and manufactures automated welding systems meeting the specific requirements of the customers. The special strength of CLOOS is the widely spread competence. Because – from the welding technology, robot mechanics and controller to positioners, software and sensors – CLOOS supplies everything from a single source.

Press contact:

Carl Cloos Schweisstechnik GmbH
Carl-Cloos-Strasse 1
35708 Haiger
GERMANY

Stefanie Nüchtern-Baumhoff
Tel. +49 (0)2773 85-478
E-Mail: stefanie.nuechtern@cloos.de